



UNIVERSITY OF
EASTERN FINLAND

2020-2021

UEF//
SMART
START

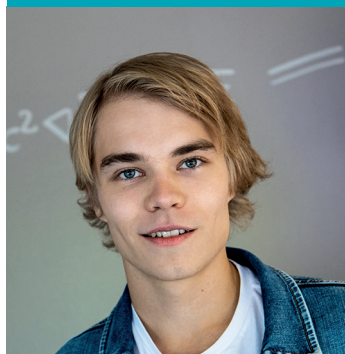
ENGLISH LANGUAGE AND CULTURE

Checklist for new students

Apply for
a residence permit
migri.fi



Get to know
the new student
orientation material
kamu.uef.fi/new-student



Check course
information on
webodi.uef.fi

Find online guides in
kamu.uef.fi

Register as a student
at UEF in
studyinfo.fi

Apply for housing
joensuunelli.fi
in Joensuu, and
kuopas.fi
in Kuopio



Other important websites

- ▶ Student Union (ISYY) **isyy.fi**
- ▶ Library **uef.fi/kirjasto**
- ▶ IT Services **uef.fi/tipa**
- ▶ Campus restaurants **uef.fi/en/campus-restaurants**
- ▶ Finnish Student Health Services (YTHS) **yths.fi**
- ▶ Language Centre (access with UEF account)
uef.fi/kielikeskus/opintoyhteiso

Academic calendar at UEF

The academic year is based on a two-semester system. The official academic year starts on 1 August and ends on 31 July. However, in the autumn semester lectures are scheduled mainly between September and mid-December, and in the spring semester between early January and May. The Christmas break is about three weeks and during the spring semester, there is a week-long Easter break. There is generally no teaching during the summer and on public holidays.

Check the up-to-date information on <https://kamu.uef.fi/en/student-book/academic-calendar/>.

DATE	EVENT/HOLIDAY
2-4 September 2020	Orientation for new international students
3 September 2020 (Kuopio campus)	Opening ceremony of the academic year
15 September 2020	Registration for new students ends
7 October 2020 at 12.15	Sports afternoon
18 December 2020 – 6 January 2021	Christmas break
16 February 2021 at 12.15	Sports afternoon
1-7 April 2021	Easter break
13 April 2021 at 12.15	Climate afternoon

Teaching will not be arranged during the opening ceremony, sports afternoon, climate afternoon, Independence Day (6 December 2020), and the First of May (30 April – 1 May 2021).

Programme overview

This Master's degree programme provides an opportunity to study English from a variety of literary and linguistic perspectives. The objectives of the programme include in-depth understanding of the multifacetedness of contemporary English studies, increased awareness of key debates in contemporary linguistics and ability to carry out independent research.

A graduate from the degree programme has gained a many-sided familiarity with the English language and Anglophone cultures. They have a wide understanding of the English language and its structure and usage and of the culture, especially literature, of the Anglophone world. They have the following academic and professional skills:

i) Academic skills:

- They know several research trends in linguistics or literary and cultural studies and have specialized on particular research area
- They can independently plan, implement and report an academic study and choose the approaches and methods relevant to their research question
- They recognize the central ethical questions in their field of research
- They master the basic practices related to academic communication in their field of research
- They have the basic skills for postgraduate study in their own field

ii) Professional skills

- They master the relevant skills required in other professions demanding expertise in language and culture
- They are able to observe and evaluate the use, variation and change of the English language in different cultural and social contexts
- They are able to evaluate the knowledge of their discipline from a professional perspective and relate it to the working life.

Degree structure

MASTER OF ARTS 120 CP

Advanced Studies in English Language and Culture 80 cp

Other Studies 40 cp

ADVANCED STUDIES IN ENGLISH LANGUAGE AND CULTURE 80 CP

A. Compulsory Studies

A.1. Research Studies 15 cp

2130553 Seminar: Literatures in English 10 cp

2130502 Methodology: Literary and Cultural Theory 5 cp

OR

2130554 Seminar: Language Research 10 cp

Methodology: Language Research 5 cp;

The students will select a minimum of 5 cp of courses from the following:

2131932 Linguistic methodology 1 (3 cp)

2132042 Introduction to statistics (2-5 cp)

2132033 Text corpora (2-5 cp)

A.2. Thesis Studies 40 cp

2130505 Pro gradu thesis 40 cp

2110036 Maturity Examination in a Foreign Language (MA) 0 cp

B. Optional Studies 25 cp

Students select 25 credits of advanced level courses offered by the unit. The selection of courses offered varies annually. Optional courses represent areas of strength at the unit. The central themes in linguistics are i) language and society, ii) language and mind, iii) language and digitality, and iv) language and school; in literature and culture the

areas are i) postcolonial and ethnic literatures, ii) contemporary literature, iii) literature and cultural studies, and iv) literary trends and genres.

2130509 Multicultural Identities in Contemporary British Literature (6 cp)

2130512 African American Fiction (5 cp)

2130537 Nineteenth-Century Sensation Fiction (5 op)

2130539 Gender and Literature (5 op)

2130541 Postcolonial Literatures in English (5 op)

2130542 Cognitive Linguistics (5 cp)

2130555 Rewriting and Intertextuality in Modern Literature (5 cp)

2130823 Translation, Language and Cognition (5 cp)

2130556 Metaphors and Figurative Language (5 cp)

2130557 Digital Tools in English Studies (5 cp)

2130558 ELF English as a Lingua Franca (5 cp)

2130559 Introduction to Sociolinguistics (5 cp)

2130546 Observing Ongoing Change in Present-Day Englishes (5 cp)

2130560 Classics of Children's Literature (5 cp)

2130561 Gothic in Contemporary Literature (5 cp)

2130562 Black Women's Writing (5 cp)

2130563 Celtic Englishes (5 cp)

2130543 Classroom English (3 op)

2130564 Contact Varieties of English (5 cp)

2130565 Contemporary American Literature (5 cp)

2130566 Cultural Memory in the Writing of the Black Diaspora (5 cp)

2130567 Ethnic American Literatures (5 cp)

2130568 Sexuality and Space in literature (5 cp)

2130569 Black Girlhood Studies (5 cp)

2110014 Linguistic and Cultural Encounters in Language Teaching (3-5 cp)

2130570 Australian Studies (5 cp)

2130519 Bilingualism (5 cp)

2119007 Methods and Corpus Technology in Variationist Research (3 op)
2130571 Lexical Priming (5 cp)
2130572 Discourse Analysis and Pragmatics (3 cp)
2130573 Poetry in English (3 op)
2130529 Erasmus Courses (2-5 cp)
2130550 Special Issues in the Study of English Language and Culture (1-6 cp)
2130551 Guest Lectures in English Language and Culture (1-6 cp)
2130552 Optional Courses in English Language and Culture (1-10 cp)

OTHER STUDIES 40 CP

Any courses offered by the university according to students' personal interests.

Recommended courses:

1131003 Orientation for International Students 1 Cp
8020290 Information Skills and Sources in Humanities for International Students 1 Cp
8031004 University Computing Skills, Lectures, 1 Cp
8031004 University Computing Skills, Exercises, 1 Cp
8031003 University Study Skills, 1 Cp
8014301 Finnish 1, 4 Cp
8014302 Finnish 2, 4 Cp
8014303 Finnish 3, 4 Cp
8014304 Finnish 4, 4 Cp
1130007 Career Planning - international students seeking a job or traineeship in Finland
2 Cp
2110043 Traineeship relevant to student's field of study, 10 cp
2110021 Work Experience, 1-10 Cp

How to study at UEF?

GENERAL

The first study year starts with an orientation week to help international students to familiarize themselves with the Finnish study environment. The orientation week is followed by courses that take usually 2 to 8 weeks each. A course may include lectures, seminars, practices, and individual work. You will have several courses going on at the same time. The second study year has less courses, as the majority of the year is dedicated for writing the Master's thesis.

COURSE REGISTRATIONS

For a detailed curriculum and course descriptions, please see UEF's study register WebOodi: <https://weboodi.uef.fi/weboodi/etusivu.html?Kieli=6> - Instruction and courses - Course catalogues - Philosophical Faculty. Registering for all courses is done in WebOodi. It is also possible to change your contact information and view the record of your completed studies in WebOodi.

Please note that registration for some courses closes already in early September!

TIMETABLES

Students do not get ready-made weekly timetables. Instead, students are responsible for making their own timetables. There is some amount of flexibility regarding which courses to choose and when to complete a particular course, so different students will have slightly different schedules. There is no special exam period as every course has its own exam at the end of the course (there are also courses without exams). You can use Lukari (<https://lukari.uef.fi/>) or Tuudo (a smart phone app) to help you build your personal timetable.

MINORS

Minors are not compulsory in the degree structure of our Master's degree programmes. However, you can include a minor subject in your degree. Your choice of the minor can be based on your own interests and your future career prospects. It is essential that your degree becomes an interesting and meaningful whole that supports your transfer to the work life. The minimum extent of a minor is 25 ECTS. Please see WebOodi or UEF KAMU Student handbook (<https://kamu.uef.fi/en/student-book/minor-studies/>) for minors available in English.

RECOGNITION OF PRIOR LEARNING

Recognition of prior learning (RPL) refers to a set of practices and procedures that can be used to assess the prior learning of the student and to approve that learning as part of the student's studies. Prior learning may be a result of the student's earlier studies or it can have been acquired in some other manner. The recognition of prior learning is based on the correspondence between the applicant's competencies and the content and level of the pursued degree and its components, as defined in the learning outcomes. Instructions for making a RPL application can be found at UEF KAMU Student handbook <https://kamu.uef.fi/en/student-book/recognition-of-prior-learning/>.

INTERNATIONAL EXCHANGE

University of Eastern Finland offers multiple possibilities for degree students to complete a part of your studies in some university abroad. Please find more information on student exchange, traineeships abroad, and other possibilities for internationalization at UEF KAMU Student handbook: <https://kamu.uef.fi/en/opkirja-kategoriat/study-abroad/>.

STUDENT UNION MEMBERSHIP

The Student Union of the University of Eastern Finland is responsible for looking out for the interests and rights of the university's students. As a member of the Student Union, you are entitled to a student ID card and the benefits and services that come with it. By showing your student ID card, you will get a discount from the lunch prices at most the campus restaurants. There are also discounts on public transportation, at a number of shops, restaurants, cinemas, etc. For instructions for ordering a student ID card, see the Student Union's website: <https://www.isyy.fi/en/services/membership/student-card-and-term-sticker.html>.

SPORTS SERVICES

SYKETTÄ Joensuu is the very own sports service for the students and staff of the University of Eastern Finland and the Karelia University of Applied Sciences. SYKETTÄ offers a diverse and inexpensive sports calendar with something for everyone: around 60 instructed group exercise classes, 70 ball sports turns, and turns for different gyms are available every week. Please see more at <https://xn--sykett-gua.fi/joensuu/en/>.

Guidance and help

HEAD OF THE PROGRAMME

Professor Mikko Laitinen

email: mikko.laitinen@uef.fi

mobile: +358504412389

ADMINISTRATIVE COORDINATOR

Juuso Loikkanen, PhD

email: juuso.loikkanen@uef.fi

mobile: +358504092532

COURSE-SPECIFIC INFORMATION

In questions pertaining to a particular course, please contact the teacher of the course.

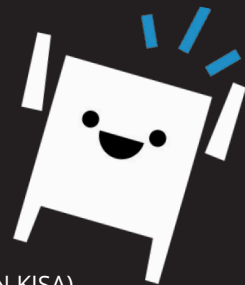
Welcome to Eastern Finland, the University of Eastern Finland and our Student Union!

At first, everything can feel new and confusing, but luckily you have joined a student community where you will surely find all the support you need. Students are a wonderful bunch and we at the Student Union of the University of Eastern Finland (ISYY) will provide you recreational activities, sports services and opportunities to make a difference. We also look out for your interests, so that you can focus on your studies. Your Student Organisation is the link to other students of your field, while the Student Union is the gateway to all the joys and benefits of student life.

ISYY may already be familiar to you. Once you have registered to the University, you can pay our membership fee, which also includes the Finnish Student Health Service (FSHS) fee for the autumn semester. We are a service and lobbying organisation for students, and that means You. From students to students, with love.

SOME OF OUR SERVICES AND BENEFITS AVAILABLE TO OUR MEMBERS ARE:

- ▶ Interest advocacy
- ▶ Recreational activities and events
- ▶ SYKETTÄ Sports Services
- ▶ Sports rental equipment and venue hire
- ▶ International Services
- ▶ Communications services (e.g. newsletters)
- ▶ Student card and free student calendar
- ▶ Customer service at our office
- ▶ Anti-Harassment Contact Persons
- ▶ ISYY Club memberships (including ESN Joensuu and ESN KISA)
- ▶ Support and services for Student Associations (e.g. grants and training)
- ▶ Opportunities to make a difference in the Student Union and the University



Visit our website to learn more about the Student Union, our operations, services, and all the fun and useful things ISYY membership offers you. Our expert staff is also ready to help you anytime in English! If you really get excited about our work, become involved with us!

We wish you the best in your studies this semester and a happy student life!

READ MORE: isyy.fi/en/services/for-new-students



fb|ISYY



@ISYYH



@isyyuef



Itä-Suomen yliopiston ylioppilaskunta

ISYY.FI

ESN for international students

WHO ARE WE?

ESN Joensuu and ESN KISA are part of ISYY dedicated to the international students. We are part of Erasmus Students Network (ESN) with more than 528 local sections in 42 countries. The most important task of the ESN sections is to introduce Finnish culture and lifestyle to international students and give Finnish students an opportunity to gain international experiences by arranging events and activities. We are active in promoting intercultural understanding and social inclusion.

HOW TO BECOME A MEMBER?

Every member of ISYY is an ESN member. You can participate in our events (most of them free of charge) and to our trips, if you are interested in gaining international experiences. Become a board or active member?

Becoming a board or active member gives you the opportunity to participate in the organization of events and decision making. The tasks of board members are the planning and management of events and trips, communication, finding partners and being part of the decision making in the Erasmus student network (ESN). Active members can participate in organizing events and trips. If you wish to participate, please join our meetings, they are open to everyone. Contact us for meeting schedule and location.

EVENTS WE ORGANISE

Kuopio: We organise get to know each other nights, movie nights, International food festivals, SitSits, Wine and cheese nights, Board game nights, Barbeques and picnics, Futsal tournaments, Ice hockey watching, Smoke Sauna and the list is open to your suggestions! We have at least one event per week so check out our facebook!

Joensuu: Would you like to go sledging, hike in Koli or participate in Sitsit? In that case, ESN Joensuu is the right club for you! We organise many events and activities during the academic year, such as, Get to Know Each Other Party, Surviving Winter in Finland, International Dinner and the famous Vappu celebration! We also organise trips to Lapland, Lofoten, St. Petersburg, and Stockholm together with Timetravels! You can buy our ESN cards, overalls and badges at the Student Union office. Come join us!

GET INVOLVED!

ESN Joensuu esnjoensuu@esnfinland.eu | esnjoensuu.fi |   @esnjoensuu

ESN Kisa (Kuopio) esnkisa@gmail.com | esnkisa.eu/contact |   @esnkisa



INTERNATIONAL EXCHANGE
ERASMUS STUDENT NETWORK

UEF// Digital tools for students

The University of Eastern Finland uses a wide range of digital tools that help you with your studies, work and communication. Using these tools is the best way to stay updated on matters pertaining to your studies and the university.

UEF// KAMU

The Student Handbook **KAMU** is an ever-evolving information bank, where you can find instructions that concern all students, as well as links to various services.

kamu.uef.fi



WEBOODI is your most important tool right from the start! Use WebOODi to register for the academic year, exams and courses, and to make your PSP.

weboodi.uef.fi



YAMMER is an internal communication channel for students and staff. Everyone can join in the discussion, follow different groups and create new ones. The UEF Students group is intended for information that concerns all students, and the Yammer group of your study community is good source of the latest information in your field. It's a smart move to join and follow both of these groups. You can find a link to Yammer on the university's home page.



AN EMAIL ACCOUNT is automatically created for you in the form username@student.uef.fi. Log in to your email and other O365 services by entering your username in the form username@uef.fi. You can find a link to student email on the university's home page.

uef.fi

A STUDY COMMUNITY is a community created for and featuring information aimed at students of a specific department, unit, major subject or degree programme. General studies-related information is also shared in the study communities. The study communities are part of the Office 365 environment, and you can log in with your UEF credentials. You can find links to the study communities in Kamu.



TUUDO is a free mobile app (for iOS and Android) via which you can register for courses and exams. In Tuudo, you can also find your study records and automatically created schedule, as well as campus maps and public transport timetables.

tuudo.fi

Feeling lost? Kamu will help you out!

All our latest information can be found in the online student handbook **Kamu**. There is information for all the phases of your studies – from freshman year to graduation. Besides guides, information on our services and UEF news, you can search for tips to improve your study skills, or check what kind of campus activities are available. Please check this online material to ensure your smooth start at UEF. Your orientation programme will start on 31 August 2020. The schedule of the orientation week can be found in

kamu.uef.fi

What to do
after my arrival?
Search
Checklist

How to study at UEF?
Search
Study Skills

What is
an academic quarter?
Search
Glossary

Where are my
fellow students?
Search
Study Communities

I am sick,
what to do?
Search
Health Care

Are there restaurants
on campus?
Search
Lunch

What happens
during the summer?
Search
Summer School

IT problems?
Search
IT Services

What type of
sports can I do?
Search
Sports