



UNIVERSITY OF
EASTERN FINLAND

2020-2021

**UEF//
SMART
START**

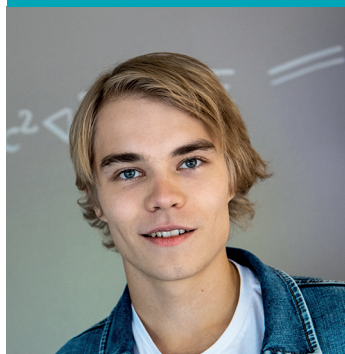
MEDICAL PHYSICS

Checklist for new students

Apply for
a residence permit
migri.fi



Get to know
the new student
orientation material
kamu.uef.fi/new-student



Check course
information on
webodi.uef.fi

Find online guides in
kamu.uef.fi

Register as a student
at UEF in
studyinfo.fi

Apply for housing
joensuunelli.fi
in Joensuu, and
kuopas.fi
in Kuopio



Other important websites

- ▶ Student Union (ISYY) **isyy.fi**
- ▶ Library **uef.fi/kirjasto**
- ▶ IT Services **uef.fi/tipa**
- ▶ Campus restaurants **uef.fi/en/campus-restaurants**
- ▶ Finnish Student Health Services (YTHS) **yths.fi**
- ▶ Language Centre (access with UEF account)
uef.fi/kielikeskus/opintoyhteiso

Welcome to the special unit of science!

Congratulations! You have been accepted to study in the Master's Degree Programme in Medical Physics in the city of Kuopio. We at UEF will do our best to make your studies and life in Finland rewarding.

At the Department of Applied Physics, we educate specialists to address major global challenges. Our research excels in three physics sub-disciplines:

- In aerosol physics the main aim is to solve the role of atmospheric aerosols in climate change.
- In computational physics we harness hard science in mathematical modelling and in inverse problems e.g. to the service of industry.
- In medical physics research aims for earlier diagnosis and better therapy.

We wish you a great time here at the Department of Applied Physics!

Siru Kaartinen, PhD, medical physicist, programme coordinator

email: siru.kaartinen@uef.fi

office: Melania 112/2 (1st floor) & Kuopio University Hospital

mobile: +358 50 435 4326



Rami Korhonen, professor, leader of the programme

email: rami.korhonen@uef.fi

office: Melania 329 (3rd floor)

mobile: +358 40 355 3260



Welcome to Kuopio! Tervetuloo mualiman napaan!

Congratulations on your admission and welcome to study Medical Physics in the University of Eastern Finland! Here you will be on the forefront of science with great opportunities such as hospital internships and international networking.

We are excited to have you! As your tutors, we will be here to help you with issues you have regarding studies, accommodation, living in Finland or anything else you can come up with. You are encouraged to contact us even before you arrive for assistance and advice.

Best regards, your student tutors,

Maria Laurikainen, +358 40 057 3769 ,marialau@uef.fi

Anssi Manninen, +358 50 532 4356 ,ansman@student.uef.fi



Hello and welcome to Finland!

Hyeena ry is a relatively small student organization but an even greater and close community, a Hyeena pack. Hyena is a gregarious animal and this pack consists of Applied Physics and Environmental Science students of the University of Eastern Finland at Kuopio campus.

Student organization takes care of the student's well-being. For example, Hyeena organizes events like parties and hang-out evenings and it is the voice of students. With a little help of Hyeena, you can get to know your fellow students better. One of the most important meaning of the student association is to bring students together!

Members of the pack can be recognized by their red coat (red overalls) and often so loud howling. We Hyeenas receive new students and acquaintances with open arms so this pack is worth approaching although it may seem wild and loud from afar. Hyeenas appreciate their members and You just the way you are.

Check more about Hyeena by going to our website www.hyeena.net, on Instagram our alias is [hyeenary](#) and we are on Facebook, search for the site named Hyeena! Unfortunately, most of the text is in Finnish but we are trying to improve our English, so you Master's students don't feel left out!

You are warmly welcome to all our events! Welcome to Kuopio and see you soon!

Riku Kiviluoto,

chairperson of the board at Hyeena

Save the date – Events of the first week (please see more detailed information on Hyeenas Facebook events!)

Monday 31st August. Hang-out evening @ Ale pupi (Kauppakatu 16)

Before the semester starts, there is this event in the bar Ale pupi. There are not any planned actions, just hanging out. Come and see before the first day, what kind of people are waiting for you! If the weather is good enough we start this event by hanging-out at Valkeisenlampi (Valkeisenkatu).

Tuesday 1st September. Get to know each other @ Henry's Pub (Vuorikatu 20)

The first day is behind, yay! In the evening, we go to Henry's Pub to get to know each other. There will be a lot of Hyeena members to meet. Party will continue at restaurant Albatrossi (Makasiininkatu 1).

Wednesday 2nd September. Hang-out evening @ Lukema (Yliopistonranta 3)

This event is alcohol-free! There will be a lot of food and good company to play games with. Basically, people just eat, chat with others and play different games! This is an opportunity to plan city orienteering...

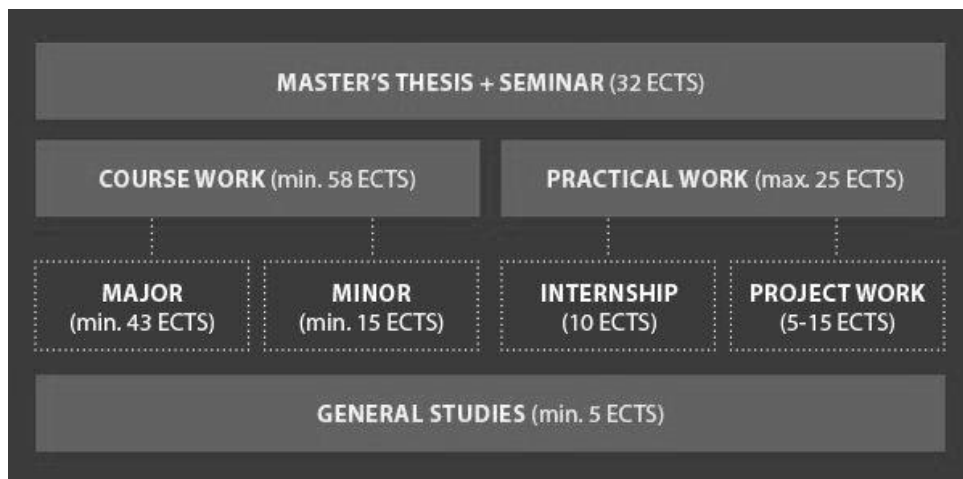
Thursday 3rd September. City orienteering @ City of Kuopio

City orienteering. This is not just running around with a map and compass! You get to know your fellow students and the beautiful city of Kuopio by doing different, funny things! This is a memorable event you don't want to miss.

Degree structure

In the Master's degree programme in Medical Physics (MedPhys) curriculum, theory meets practice: the programme includes a possibility for internships in research groups and companies. In addition, it is possible to conduct a clinical internship at the Kuopio University Hospital, consisting of e.g. quality assurance measurements, training in radiation dosage planning for cancer treatment and getting familiar with the routine tasks of a medical physicist. The Master's degree programme is based on high quality international research in medical physics and biomedical engineering performed at the Department of Applied Physics, University of Eastern Finland (Kuopio campus). The University of Eastern Finland offers a full curriculum for students of the MedPhys programme.

The study curriculum covers a wide range of topics from medical imaging data and signal analysis to clinical measurement techniques and medical radiation physics. The programme consists of 120 ECTS credits and it is expected to be completed within two years



Aims of the Master's Degree Programme

MedPhys is intended to give the student a basic understanding of the subject matter and tools to apply theoretical and practical training to various areas of medicine, including diagnostic imaging, cancer treatment, and physiological monitoring.

Each person receiving an MSc degree upon completion of these studies will:

- Possess excellent theoretical and practical skills in a wide range of applications related to medical physics (and/or engineering)
- Know how to work independently on a research topic relevant to medical physics (and/or engineering)
- Know how to present a research topic and results in a written report and in an oral presentation
- Have experience of working as a member of a research group and/or in clinical settings in a hospital
- Be trained in a highly international environment where students from all around the world have interacted and co-operated

List of courses

The curriculum and comprehensive list of courses can be found from the Course catalogue, which will be published at <https://weboodi.uef.fi/> (Instructions and courses → Course catalogues → Faculty of science and forestry → Department of Applied Physics → Master's Degree Programme in Medical Physics).

Academic calendar 2020-2021 at UEF and at the department of Applied Physics

The academic year is based on a two-semester system. The official academic year starts on 1 August and ends on 31 July. However, in the autumn semester lectures are scheduled mainly between September and mid-December, and in the spring semester between early January and May. The Christmas break is about three weeks and during the spring semester, there is a week-long Easter break. There is generally no teaching during the summer and on public holidays.

Check the up-to-date information on <https://kamu.uef.fi/en/student-book/academic-calendar/>.

DATE	EVENT/HOLIDAY
1 September 2020	Orientation for new MedPhys students at the Department of Applied Physics
2-4 September 2020	UEF Orientation for Master's Degree students
15 September 2020	Registration for new students ends
18 September 2020	Applied Physics Research Day
7 October 2020	Sports afternoon
28 October	MedPhys 2020-2022 group meeting
16 December 2020 - 6 January 2021	Christmas break
13 January 2020	MedPhys 2020-2022 group meeting
16 February 2020	Sports afternoon
15 March	MedPhys 2020-2022 group meeting
1-7 April 2021	Easter break
13 April 2021	Climate afternoon
22 May 14-16	Graduation ceremony of the Department of Applied Physics

Teaching will not be arranged during the opening ceremony, sports afternoon, climate afternoon, Independence Day, Maundy Thursday and the First of May.

Schedule of the first week

The first days of your studies are important orientation days. You will attend the general orientation held by the University of Eastern Finland. In addition, your tutors will give a tour around the department of Applied Physics and you will meet the staff members of the department.

TUESDAY 1st SEPTEMBER

TIME	PLACE	TOPIC
9:00	Snellmania main hall	Tutors will pick you up from Snellmania main hall
9:15-9:30	Melania 100	Welcome to UEF Applied Physics! Meeting the head of the programme, coordinator of the programme and the head of the department.
9:30-10:30	Melania 100	General info of the programme
10:30-11	Department of Applied Physics	Guided tour at the department
11-12	Amica Snellmania	Lunch with tutors and former & current students of MedPhys
12-16	Me 112/2	Personal study plan meetings with the coordinator of the programme

WEDNESDAY 2th SEPTEMBER – Friday 4th SEPTEMBER

General orientation given by the University.



” *I appreciate the freedom and safety, and the fact that it is not a competitive environment – on the contrary, everyone is willing to help. There’s a mutual respect between teachers and students, and you feel that you are trusted in. It’s important to me that I can speak my mind to the teachers and discuss openly, as there’s no hierarchy in a way.*

Williane Bernardes, MedPhys student 2018-2020, Brazil



”

“I love mathematics, physics and technical things. I realized that in medical physics I can combine both: the strong motivation to contribute to people’s health and to work with complex machines.”

Kamila Lepkova, MedPhys student 2018-2020, Czech Republic

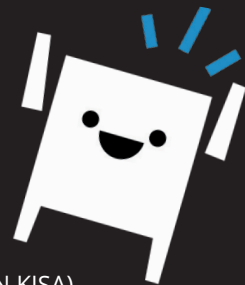
Welcome to Eastern Finland, the University of Eastern Finland and our Student Union!

At first, everything can feel new and confusing, but luckily you have joined a student community where you will surely find all the support you need. Students are a wonderful bunch and we at the Student Union of the University of Eastern Finland (ISYY) will provide you recreational activities, sports services and opportunities to make a difference. We also look out for your interests, so that you can focus on your studies. Your Student Organisation is the link to other students of your field, while the Student Union is the gateway to all the joys and benefits of student life.

ISYY may already be familiar to you. Once you have registered to the University, you can pay our membership fee, which also includes the Finnish Student Health Service (FSHS) fee for the autumn semester. We are a service and lobbying organisation for students, and that means You. From students to students, with love.

SOME OF OUR SERVICES AND BENEFITS AVAILABLE TO OUR MEMBERS ARE:

- ▶ Interest advocacy
- ▶ Recreational activities and events
- ▶ SYKETTÄ Sports Services
- ▶ Sports rental equipment and venue hire
- ▶ International Services
- ▶ Communications services (e.g. newsletters)
- ▶ Student card and free student calendar
- ▶ Customer service at our office
- ▶ Anti-Harassment Contact Persons
- ▶ ISYY Club memberships (including ESN Joensuu and ESN KISA)
- ▶ Support and services for Student Associations (e.g. grants and training)
- ▶ Opportunities to make a difference in the Student Union and the University



Visit our website to learn more about the Student Union, our operations, services, and all the fun and useful things ISYY membership offers you. Our expert staff is also ready to help you anytime in English! If you really get excited about our work, become involved with us!

We wish you the best in your studies this semester and a happy student life!

READ MORE: isyy.fi/en/services/for-new-students



fb|ISYY



@ISYYH



@isyyuef



Itä-Suomen yliopiston ylioppilaskunta

ISYY.FI

ESN for international students

WHO ARE WE?

ESN Joensuu and ESN KISA are part of ISYY dedicated to the international students. We are part of Erasmus Students Network (ESN) with more than 528 local sections in 42 countries. The most important task of the ESN sections is to introduce Finnish culture and lifestyle to international students and give Finnish students an opportunity to gain international experiences by arranging events and activities. We are active in promoting intercultural understanding and social inclusion.

HOW TO BECOME A MEMBER?

Every member of ISYY is an ESN member. You can participate in our events (most of them free of charge) and to our trips, if you are interested in gaining international experiences. Become a board or active member?

Becoming a board or active member gives you the opportunity to participate in the organization of events and decision making. The tasks of board members are the planning and management of events and trips, communication, finding partners and being part of the decision making in the Erasmus student network (ESN). Active members can participate in organizing events and trips. If you wish to participate, please join our meetings, they are open to everyone. Contact us for meeting schedule and location.

EVENTS WE ORGANISE

Kuopio: We organise get to know each other nights, movie nights, International food festivals, SitSits, Wine and cheese nights, Board game nights, Barbeques and picnics, Futsal tournaments, Ice hockey watching, Smoke Sauna and the list is open to your suggestions! We have at least one event per week so check out our facebook!

Joensuu: Would you like to go sledging, hike in Koli or participate in Sitsit? In that case, ESN Joensuu is the right club for you! We organise many events and activities during the academic year, such as, Get to Know Each Other Party, Surviving Winter in Finland, International Dinner and the famous Vappu celebration! We also organise trips to Lapland, Lofoten, St. Petersburg, and Stockholm together with Timetravels! You can buy our ESN cards, overalls and badges at the Student Union office. Come join us!

GET INVOLVED!

ESN Joensuu esnjoensuu@esnfinland.eu | esnjoensuu.fi |   @esnjoensuu

ESN Kisa (Kuopio) esnkisa@gmail.com | esnkisa.eu/contact |   @esnkisa



INTERNATIONAL EXCHANGE
ERASMUS STUDENT NETWORK

UEF// Digital tools for students

The University of Eastern Finland uses a wide range of digital tools that help you with your studies, work and communication. Using these tools is the best way to stay updated on matters pertaining to your studies and the university.

UEF// KAMU

The Student Handbook **KAMU** is an ever-evolving information bank, where you can find instructions that concern all students, as well as links to various services.

kamu.uef.fi



WEBOODI is your most important tool right from the start! Use WebOODi to register for the academic year, exams and courses, and to make your PSP.

weboodi.uef.fi



YAMMER is an internal communication channel for students and staff. Everyone can join in the discussion, follow different groups and create new ones. The UEF Students group is intended for information that concerns all students, and the Yammer group of your study community is good source of the latest information in your field. It's a smart move to join and follow both of these groups. You can find a link to Yammer on the university's home page.



AN EMAIL ACCOUNT is automatically created for you in the form username@student.uef.fi. Log in to your email and other O365 services by entering your username in the form username@uef.fi. You can find a link to student email on the university's home page.

uef.fi

A STUDY COMMUNITY is a community created for and featuring information aimed at students of a specific department, unit, major subject or degree programme. General studies-related information is also shared in the study communities. The study communities are part of the Office 365 environment, and you can log in with your UEF credentials. You can find links to the study communities in Kamu.



TUUDO is a free mobile app (for iOS and Android) via which you can register for courses and exams. In Tuudo, you can also find your study records and automatically created schedule, as well as campus maps and public transport timetables.

tuudo.fi

Feeling lost? Kamu will help you out!

All our latest information can be found in the online student handbook **Kamu**. There is information for all the phases of your studies – from freshman year to graduation. Besides guides, information on our services and UEF news, you can search for tips to improve your study skills, or check what kind of campus activities are available. Please check this online material to ensure your smooth start at UEF. Your orientation programme will start on 31 August 2020. The schedule of the orientation week can be found in

kamu.uef.fi

What to do
after my arrival?
Search
Checklist

How to study at UEF?
Search
Study Skills

What is
an academic quarter?
Search
Glossary

Where are my
fellow students?
Search
Study Communities

I am sick,
what to do?
Search
Health Care

Are there restaurants
on campus?
Search
Lunch

What happens
during the summer?
Search
Summer School

IT problems?
Search
IT Services

What type of
sports can I do?
Search
Sports