



UNIVERSITY OF  
EASTERN FINLAND

**2020-2021**

**UEF//  
SMART  
START**

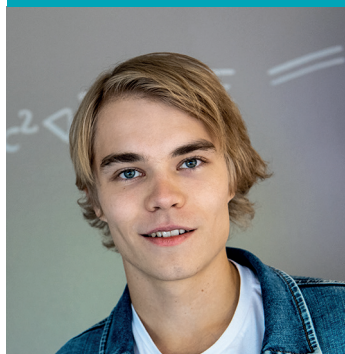
MSC WOOD MATERIALS SCIENCE

# Checklist for new students

Apply for  
a residence permit  
**migri.fi**



Get to know  
the new student  
orientation material  
**kamu.uef.fi/new-student**



Check course  
information on  
**webodi.uef.fi**

Find online guides in  
**kamu.uef.fi**

Register as a student  
at UEF in  
**studyinfo.fi**

Apply for housing  
**joensuunelli.fi**  
in Joensuu, and  
**kuopas.fi**  
in Kuopio



Other important websites

- ▶ Student Union (ISYY) **isyy.fi**
- ▶ Library **uef.fi/kirjasto**
- ▶ IT Services **uef.fi/tipa**
- ▶ Campus restaurants **uef.fi/en/campus-restaurants**
- ▶ Finnish Student Health Services (YTHS) **yths.fi**
- ▶ Language Centre (access with UEF account)  
**uef.fi/kielikeskus/opintoyhteiso**

# Schedule of the first week

## PRELIMINARY PROGRAMME, TO BE UPDATED

In Autumn 2020 the orientation programme will be given mostly online due to the covid-19 pandemic. Information material will be offered online, webinars will be held 2-4 September. In addition face-to-face sessions or meetings can be offered if possible. In addition to the general programme each Master's programme will be offering their field-specific orientation sessions.

TIME	PLACE	PROGRAMME
4 September 2020 2.00-3.00 p.m. (UCT+3)	On-line	Welcome to WMS!
7 September 2020 10.00-11.00 a.m. (UCT+3)	On-line	Info session: Personal study plan, part I
14 September 2020 10.00-11.00 a.m. (UCT+3)	On-line	Info session: Personal study plan, part II

## City Orienteering and Campus Crash 2-9 Sept

City Orienteering and Campus Crash are events for the students of UEF that kick-start the semester! During the week, you will get to know your classmates, complete fun assignments in the group around the city, and participate in different raffles. The event will be organised taking into account health and safety restrictions.

More information at the [Student Union website for Campus Crash and City Orienteering](#)

# You do want to have a career that makes a difference!

Congratulations on receiving a study place in Wood Materials Science! I warmly welcome you to the Joensuu campus of the University of Eastern Finland.

At the beginning of your studies, you will face a new international and multicultural study environment. You will also meet many new people who will be useful contacts later for your professional career. During the next two years of your studies, I hope that you will make the most out of this inspiring and enriching experience while endeavouring to achieve professional knowledge and skills.

Planning your personal study plan starts during the first week of September. Our staff at the Wood Materials Science is devoted to helping you in meeting your personal goals and career plans. MSc Wood Materials Science curriculum consists of carefully selected compulsory courses and a number of elective courses to choose.

I am here to support you in your studies and to help you in building your future career!



Dr. Ossi Turunen  
Professor in Wood Materials Science

# Student tutor's greetings!



My warmest congratulations to all of you for securing the right to study in the school of forest sciences. You have made a wonderful choice in applying to the University of Eastern Finland! My name is Veronika and I have just finished the first year of my bachelor studies in forestry. This has been a great adventure full of warm unforgettable memories and I truly hope that your experience here is going to be just as positive. I am incredibly happy to be your tutor for the beginning of the upcoming academic year. See all of you wonderful new students soon and let's make your first autumn here the very best!

Veronika Knigina  
[veronkni@student.uef.fi](mailto:veronkni@student.uef.fi)  
+358 40 326 3482

Warm greetings and congratulations to the new accepted students of the school of forest sciences here at UEF! My name is Sami and will be tutoring you alongside my colleague Veronika. I'm a graduate student in border studies and anthropology, but I have been a tutor for the faculty of natural sciences and forestry for many years now. Networking with and tutoring forestry and wood materials science students has been a great experience and I can't wait to meet you all and forge new everlasting experiences together!



Sami Tanskanen  
[samitan@student.uef.fi](mailto:samitan@student.uef.fi)  
+358 44 013 7337

# Welcome to Joensuu from JMYO!

JMYO stands for Joensuu MetsäYliOppilaat and we are student association for all forestry students in our university. Our mission is to supervise interests of our members, act between staff and students and organize sauna-evenings, parties and other fun stuff. We have also some international events like international dinner evenings and bicycle trip. Our activities are great chance to get to know Finnish students. Almost every student in our faculty is member and international students are welcome, of course! In start of fall, our board will stage an opening where we tell you more!

See u then!

Joensuu Forest Student Association

Board member and international manager, Riku Tarvainen



# I can – I am a Master in Wood Materials Science!

MSc in Wood Materials Science is a course-based taught master's degree programme. MSc Wood Materials Science consists of studies related to wood chemistry and characterisation, production and use of wood for novelty bio-based materials, products and future energy use. During the programme, you will get an overall picture on production and sourcing of functional wood biomass, bio-refining techniques, biomass conversion processes and novel product innovation. Furthermore, we provide you with precise knowledge on innovation management and business-scale solutions to support the bio-economy sector.

Joensuu is a lively and safe place to live. Students form 25% of the town population and this can be seen and heard on the streets. The university campus is compact allowing students and staff from various faculties to interact. The campus is conveniently located in the middle of the city just 10 minute walk from the town square. Public transportation is efficient and a majority of buses run directly through the campus area.

All the students of the School of Forest Sciences are warmly welcomed to join the Forestry Students' Association. This association offers students activities such as opportunities to participate in the annual first-year student initiation, skiing events, parties, and hunting trips organised by Forestry students' hunting club.

University has also a Student Union, which among other things organises trips to other parts of Finland and neighbouring countries, arranges get-together parties and sports events. All the UEF degree students are automatically members of the student union and most welcome to participate in the events.

Joensuu offers great facilities for doing various sports. Right next to the campus are Aquatic Centre Vesikko swimming pool and gym, in-door and out-door athletics tracks, in-door and out-door ice-hockey rinks, football fields, tennis courts, and hiking trails that turn into cross country skiing tracks in the winter. Just outside of Joensuu are world class venues for Kontiolahti biathlon and Koli downhill slopes. Joensuu is located by lake Pyhaselka, one of the largest lakes in Finland, which offers great facilities for swimming, fishing, sailing, kayaking and of course ice-swimming, ice-fishing, skating and skiing. If sports is more than a hobby and you are interested in combining studies and goal-oriented training, Joensuu Sports Academy is for you.

# Guidance and help

All the study related guides and instructions can be found in Kamu (Kamu = Pal in English). Kamu consists of Student Handbook, Study Communities and Yammer groups. In Kamu Student Handbook you will find instructions, services and bulletins common to all students. Additionally, you belong to a study programme-specific Study Community. In study communities you will find information on studies and a Yammer discussion forum. Study communities complement the general Kamu Student Handbook information with programme-specific instructions.

Kamu Student Handbook: [kamu.uef.fi](http://kamu.uef.fi)

Forest Sciences Study Community: [//forestsciencesstudycommunity/](https://forestsciencesstudycommunity/)

School of Forest Sciences Yammer group: [www.yammer.com/uef.fi](http://www.yammer.com/uef.fi)

” *I can still remember the very beginning of my studies and how our study coordinator helped me and my classmates in every way.*

*Iqbal Imran - Bangladesh*

## **Programme coordinator:**

Pauliina Karvinen (MSc Agr&For)

email: [pauliina.karvinen@uef.fi](mailto:pauliina.karvinen@uef.fi)

office: Borealis 371

mobile: +358 50 442 2572

Dr. Ossi Turunen, Professor

email: [ossi.turunen@uef.fi](mailto:ossi.turunen@uef.fi)

office: Borealis 369

mobile: +358 50 342 5151

Dr. Antti Haapala, Associate professor

email: [antti.haapala@uef.fi](mailto:antti.haapala@uef.fi)

office: Borealis 377

mobile: +358 44 520 2849



# Degree structure

The Master of Science (M.Sc.) in Wood Materials Science is a two-year full-time study program. Master's degree consists of 120 ECTS credits of studies in one main subject, wood materials science. One ECTS credit corresponds to 25-30 hours of work. The two-year education is constructed of compulsory and elective studies. Upon successful completion, you will graduate with a Master of Science degree.

## FIRST STUDY YEAR

Compulsory courses constitute a majority of your studies. Additionally, you must choose enough elective courses to complete at least 55 ECTS credits during the first academic year and 120 ECT in total. Although it is your responsibility to draw yourself a personal study plan, below is a suggestion for a schedule. All the compulsory courses run once per year whereas most of the elective courses run every other year.

### First study year, period I (1 September – 23 October 2020):

3513061 Academic skills in forest sciences 1.5 cp  
3513142 Basics of wood materials science 4 cp  
3622111 Basic statistics in English 5 cp  
3513130 Organic and biomass chemistry 6 cp  
1131003 Orientation for international students 1 cp (additional)  
8031006 University computing skills 2 cp (additional)  
8031003 University study skills 1 cp (additional)

### First study year, period II (26 October – 15 December 2020)

8020270 Information skills and sources in science and forestry for international students 1 cp  
3513148 Research methodology in forest sciences 3.5 cp  
3352578 Wood-based solid and composite materials 5 cp

### First study year, period III (7 January – 19 March 2021)

3513162 Laboratory practices and methods for wood material science 5 cp  
3513147 Perspectives to bioeconomy 6 cp

### First study year, period IV (22 March – 21 May 2021)

3122242 Structure and function of plants 3 cp  
3514017 Industrial forest biotechnology and biorefining 6 cp  
3513136 Practical training in wood material science 10 cp

## **SECOND STUDY YEAR**

- 3513166 Thesis seminar in wood material science 2 cp
- 3513139 M.Sc. thesis 30 cp
- 3513159 Structure and properties of wood-based materials 5 cp
- 3513135 Innovation management 4 cp
- 8015013 Academic writing skills for students in the international master's degree programmes of the school of forest sciences 3 cp (additional)
- 1130007 Career planning - international students seeking a job or traineeship in Finland 2 cp (additional)

## **MSc WOOD MATERIALS SCIENCE CURRICULUM 2020-22**

### **Compulsory studies, 97 ECTS**

- 3513061 Academic skills in forest sciences 1.5 cp
- 3513142 Basics of wood materials science 4 cp
- 3622111 Basic statistics in English 5 cp
- 3514017 Industrial forest biotechnology and biorefining 6 cp
- 8020270 Information skills and sources in science and forestry for international students 1 cp
- 3513135 Innovation management 4 cp
- 3513162 Laboratory practices and methods for wood material science 5 cp
- 3513139 M.Sc. thesis 30 cp
- 3513141 Maturity test 0 cp
- 3513130 Organic and biomass chemistry 6 cp
- 3513147 Perspectives to bioeconomy 6 cp
- 3513136 Practical training in wood material science 10 cp
- 3513148 Research methodology in forest sciences 3.5 cp
- 3122242 Structure and function of plants 3 cp
- 3513159 Structure and properties of wood-based materials 5 cp
- 3513166 Thesis seminar in wood material science 2 cp
- 3352578 Wood-based solid and composite materials 5 cp

### **Alternative studies, choose 18-23 ECTS**

- 3312073 Applications of photonics 4 cp
- 3410316 Basic principles of mass spectrometry 4 cp
- 3513019 Bioenergy markets and policies 6 cp
- 3410364 Biological mass spectrometry 3 cp
- 3410336 Characterization methods for polymers 3 cp
- 3410365 Chemistry of biofuels 4 cp
- 3513150 Co-management of natural resources 5 cp
- 3513040 Economics of multiple-use forestry 3 cp
- 3513057 Fibrous products 5 cp
- 3513055 Forest products mechanics 6 cp
- 3513151 International forest governance and environmental policy 5 cp

3352572 Material techniques 5 cp  
3513058 Measurement, scaling and instrumentation 5 cp  
3123186 Optical methods in plant biology and environmental research 5 cp  
3312039 Paper and printing optics 4 cp  
3410369 Polymers and nanomaterials 4 cp  
3513129 Supply and energy use of lignocellulosic biomass 6 cp

**Additional studies, choose 0-5 cp**

8015013 Academic writing skills for students in the international master's degree programmes of the school of forest sciences 3 cp  
1130007 Career planning - international students seeking a job or traineeship in Finland 2 cp  
3352573 Characterization of materials 5 cp  
3513127 Current issues in forest conservation and biodiversity 3 cp  
3122324 Book examination, plant physiology (intermediate studies) 1-7 cp  
3123198 Function of plants in changing environment 8 cp  
3513149 Intensive forest management and production of forest biomass 3 cp  
3310306 Numerical methods in photonics 2 cp  
1131003 Orientation for international students 1 cp  
8031006 University computing skills 2 cp  
8031003 University study skills 1 cp



*I took a leap of faith and came here to experience one of the best educational systems in the world.*

*Muhammad Mohsin - Pakistan*

# Academic calendar at UEF

The academic year is based on a two-semester system. The official academic year starts on 1 August and ends on 31 July. However, in the autumn semester lectures are scheduled mainly between September and mid-December, and in the spring semester between early January and May. The Christmas break is about three weeks and during the spring semester, there is a week-long Easter break. There is generally no teaching during the summer and on public holidays.

Check the up-to-date information on <https://kamu.uef.fi/en/student-book/academic-calendar/>.

DATE	EVENT/HOLIDAY
2-4 September 2020, and 7-11 January 2021	Orientation for new Master's Degree students
2 May - 15 September 2020	Registration for new students
3 September 2020 (in Kuopio)	Opening ceremony of the academic year
7 October 2020, and 16 February 2021	Sports afternoon
16 December 2020 – 6 January 2021	Christmas break
1-7 April 2021	Easter break
13 April 2021	Climate afternoon

Teaching will not be arranged during the opening ceremony, sports afternoon, climate afternoon, Independence Day (6 December), Maundy Thursday and the First of May.

## Join us on

- Facebook: [facebook.com/UEFforest/](https://facebook.com/UEFforest/)  
LinkedIn: [linkedin.com/groups/4646896/](https://linkedin.com/groups/4646896/)  
Twitter: [twitter.com/UniEastFinland](https://twitter.com/UniEastFinland)  
Instagram: [instagram.com/uniuef/](https://instagram.com/uniuef/)

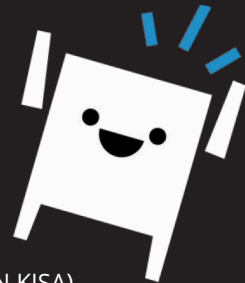
# Welcome to Eastern Finland, the University of Eastern Finland and our Student Union!

At first, everything can feel new and confusing, but luckily you have joined a student community where you will surely find all the support you need. Students are a wonderful bunch and we at the Student Union of the University of Eastern Finland (ISYY) will provide you recreational activities, sports services and opportunities to make a difference. We also look out for your interests, so that you can focus on your studies. Your Student Organisation is the link to other students of your field, while the Student Union is the gateway to all the joys and benefits of student life.

ISYY may already be familiar to you. Once you have registered to the University, you can pay our membership fee, which also includes the Finnish Student Health Service (FSHS) fee for the autumn semester. We are a service and lobbying organisation for students, and that means You. From students to students, with love.

## SOME OF OUR SERVICES AND BENEFITS AVAILABLE TO OUR MEMBERS ARE:

- ▶ Interest advocacy
- ▶ Recreational activities and events
- ▶ SYKETTÄ Sports Services
- ▶ Sports rental equipment and venue hire
- ▶ International Services
- ▶ Communications services (e.g. newsletters)
- ▶ Student card and free student calendar
- ▶ Customer service at our office
- ▶ Anti-Harassment Contact Persons
- ▶ ISYY Club memberships (including ESN Joensuu and ESN KISA)
- ▶ Support and services for Student Associations (e.g. grants and training)
- ▶ Opportunities to make a difference in the Student Union and the University



Visit our website to learn more about the Student Union, our operations, services, and all the fun and useful things ISYY membership offers you. Our expert staff is also ready to help you anytime in English! If you really get excited about our work, become involved with us!

We wish you the best in your studies this semester and a happy student life!

**READ MORE:** [isyy.fi/en/services/for-new-students](https://isyy.fi/en/services/for-new-students)



fb|ISYY



@ISYYH



@isyyuef



Itä-Suomen yliopiston ylioppilaskunta

ISYY.FI

# ESN for international students

## WHO ARE WE?

ESN Joensuu and ESN KISA are part of ISYY dedicated to the international students. We are part of Erasmus Students Network (ESN) with more than 528 local sections in 42 countries. The most important task of the ESN sections is to introduce Finnish culture and lifestyle to international students and give Finnish students an opportunity to gain international experiences by arranging events and activities. We are active in promoting intercultural understanding and social inclusion.

## HOW TO BECOME A MEMBER?

Every member of ISYY is an ESN member. You can participate in our events (most of them free of charge) and to our trips, if you are interested in gaining international experiences. Become a board or active member?

Becoming a board or active member gives you the opportunity to participate in the organization of events and decision making. The tasks of board members are the planning and management of events and trips, communication, finding partners and being part of the decision making in the Erasmus student network (ESN). Active members can participate in organizing events and trips. If you wish to participate, please join our meetings, they are open to everyone. Contact us for meeting schedule and location.

## EVENTS WE ORGANISE

**Kuopio:** We organise get to know each other nights, movie nights, International food festivals, SitSits, Wine and cheese nights, Board game nights, Barbeques and picnics, Futsal tournaments, Ice hockey watching, Smoke Sauna and the list is open to your suggestions! We have at least one event per week so check out our facebook!

**Joensuu:** Would you like to go sledging, hike in Koli or participate in Sitsit? In that case, ESN Joensuu is the right club for you! We organise many events and activities during the academic year, such as, Get to Know Each Other Party, Surviving Winter in Finland, International Dinner and the famous Vappu celebration! We also organise trips to Lapland, Lofoten, St. Petersburg, and Stockholm together with Timetravels! You can buy our ESN cards, overalls and badges at the Student Union office. Come join us!

## GET INVOLVED!

ESN Joensuu [esnjoensuu@esnfinland.eu](mailto:esnjoensuu@esnfinland.eu) | [esnjoensuu.fi](http://esnjoensuu.fi) |   @esnjoensuu

ESN Kisa (Kuopio) [esnkisa@gmail.com](mailto:esnkisa@gmail.com) | [esnkisa.eu/contact](http://esnkisa.eu/contact) |   @esnkisa



INTERNATIONAL EXCHANGE  
ERASMUS STUDENT NETWORK

# UEF// Digital tools for students

The University of Eastern Finland uses a wide range of digital tools that help you with your studies, work and communication. Using these tools is the best way to stay updated on matters pertaining to your studies and the university.

## UEF// KAMU

The Student Handbook **KAMU** is an ever-evolving information bank, where you can find instructions that concern all students, as well as links to various services.

[kamu.uef.fi](http://kamu.uef.fi)



**WEBOODI** is your most important tool right from the start! Use WebOODi to register for the academic year, exams and courses, and to make your PSP.

[weboodi.uef.fi](http://weboodi.uef.fi)



**YAMMER** is an internal communication channel for students and staff. Everyone can join in the discussion, follow different groups and create new ones. The UEF Students group is intended for information that concerns all students, and the Yammer group of your study community is good source of the latest information in your field. It's a smart move to join and follow both of these groups. You can find a link to Yammer on the university's home page.



**AN EMAIL ACCOUNT** is automatically created for you in the form [username@student.uef.fi](mailto:username@student.uef.fi). Log in to your email and other O365 services by entering your username in the form [username@uef.fi](mailto:username@uef.fi). You can find a link to student email on the university's home page.

[uef.fi](http://uef.fi)

**A STUDY COMMUNITY** is a community created for and featuring information aimed at students of a specific department, unit, major subject or degree programme. General studies-related information is also shared in the study communities. The study communities are part of the Office 365 environment, and you can log in with your UEF credentials. You can find links to the study communities in Kamu.



**TUUDO** is a free mobile app (for iOS and Android) via which you can register for courses and exams. In Tuudo, you can also find your study records and automatically created schedule, as well as campus maps and public transport timetables.

[tuudo.fi](http://tuudo.fi)

# Feeling lost? Kamu will help you out!

All our latest information can be found in the online student handbook **Kamu**. There is information for all the phases of your studies – from freshman year to graduation. Besides guides, information on our services and UEF news, you can search for tips to improve your study skills, or check what kind of campus activities are available. Please check this online material to ensure your smooth start at UEF. Your orientation programme will start on 31 August 2020. The schedule of the orientation week can be found in

[kamu.uef.fi](http://kamu.uef.fi)

What to do  
after my arrival?  
Search  
**Checklist**

How to study at UEF?  
Search  
**Study Skills**

What is  
an academic quarter?  
Search  
**Glossary**

Where are my  
fellow students?  
Search  
**Study Communities**

I am sick,  
what to do?  
Search  
**Health Care**

Are there restaurants  
on campus?  
Search  
**Lunch**

What happens  
during the summer?  
Search  
**Summer School**

IT problems?  
Search  
**IT Services**

What type of  
sports can I do?  
Search  
**Sports**